



STE. ANNE MUNICIPALITY

BY-LAW #2023-18

Being a By-Law of the Rural Municipality of Ste. Anne to establish the maximum speed limit on a highway or portion of a highway under the responsible traffic authority's jurisdiction and to establish a Reduced Speed School Zone.

WHEREAS *The Municipal Act* provides as follows:

Spheres of jurisdiction

232(1) A council may pass by-laws for municipal purposes respecting the following matters:

- (a) The safety, health, protection and well-being of people, and the safety and protection of property;*

WHEREAS *The Highway Traffic Act, CCSM, C H60* gives a traffic authority the ability to establish a speed limit up to 90 km/h for any geographic area, highway or portion of a highway for which it is the responsible traffic authority;

AND WHEREAS section 6 of the Traffic Authority Speed Limits Regulation provides that a By-Law of a traffic authority must:

- (a) Describe any portion of highway which the speed limit applies, either by reference to a specific highway and the points on the highway at which the speed limit begins and ends or by reference to the boundaries of a geographic area.
- (b) Indicate whether the speed limit applies at all times or applies seasonally.
- (c) If the speed limit applies seasonally, indicate the date that the speed limit starts and the day that it ends in each year.
- (d) Be accessible to the public.

AND WHEREAS Section 98.1 of *The Highway Traffic Act* and *The Reduced-Speed School Zones Regulation No. 136/2013* authorize a council to pass by-laws establishing the reduced maximum permitted speed for vehicles being driven on a highway within a school zone within the geographic boundaries of a municipality;

AND WHEREAS Council for the Rural Municipality of Ste. Anne deems it advisable and in the public interest to fix a speed limit for the Highways or portions of Highways as well as school zones with a reduced maximum speed, for which the Rural Municipality of Ste. Anne has jurisdiction;

NOW THEREFORE Council of the Rural Municipality of Ste. Anne enacts as follows:

1. That this By-Law is called the "Speed Limit and School Zone By-Law"
2. Definition:
 - a. "**Highway**" means any place or way, including any structure forming part thereof, which or any part of which the public is ordinarily entitled or permitted to use for the passage of vehicles, with or without fee or charge therefor, and includes all the space between the boundary lines thereof; but does not include any area designed or intended, and primarily used, for the parking of vehicles and the necessary passageways thereon;



STE. ANNE MUNICIPALITY

- b. That for the purposes of this By-Law, “reduced-speed school zone”, “school”, “school property”, “traffic control device” and “vehicle” shall have the same meanings as set out in *The Highway Traffic Act* and the *Reduced-Speed School Zones Regulation No. 136/2013*.
3. That the Maximum Speed Limits on Highways within the Rural Municipality of Ste. Anne be as follows:
 - a. At all times of the year, the maximum speed limit on Highways under the jurisdiction of the Rural Municipality of Ste. Anne is as prescribed in the Schedule “A” that is attached and forms part of this By-Law;
4. That the following portion of Highway is designated as a reduced-speed school zone with reduced maximum permitted speed:
 - a. School: Richer School, 43 Dawson Road E; Richer MB being that portion of Dawson Road in front of the Richer School and extends 100 metres in either direction beyond the school property line (“Reduced-Speed School Zone”) and as detailed in Schedule “B” that is attached and forms part of this By-Law.
5. The Reduced-Speed School Zone shall have the following conditions:
 - a. The maximum permitted speed for vehicles being driven in a Reduced-Speed School Zone on a Highway is 30 km/h.
 - b. The maximum permitted speeds established under section 5(a) shall apply in the months of September to June (inclusive) from Monday to Friday between the hours of 8:00 am to 4:30 pm within a Reduced-Speed School Zone.
 - c. The Municipality shall identify a Reduced-Speed School Zone with traffic control devices that comply with the Reduced-Speed School Zones Regulation No. 136/13
6. That this By-law shall be enforced pursuant to the Municipality’s General Enforcement By-law, as amended from time to time;
7. That any person found to be in contravention of any of the provisions of this By-Law, and at the discretion of the Designated Officer, may be subject to the fines outlined in Schedule “C”.
8. That any fine levied or costs incurred in relation to Section 7 of this By-Law shall be paid directly to the Municipality by the person who has committed the offence, or collected in the manner by which a tax may be collected or enforced under *The Municipal Act of Manitoba* and the Municipality’s General Enforcement By-Law, as amended from time to time.
9. That By-law #10-2017, the Reduced Speed School Zone By-law, is hereby repealed.



STE. ANNE MUNICIPALITY

DONE AND PASSED by the Council of the Rural Municipality of Ste. Anne in open Council assembled in Ste. Anne, in the Province of Manitoba this *23rd* day of *August*, 2023.

Reeve
Richard Pelletier

Chief Administrative Officer
Mike McLennan

Read a first time this 26th day of July, 2023, by Resolution #2023-388.

Read a second time this 23rd day of August, 2023, by Resolution #2023-411.

Read a third time this 23rd day of August, 2023, by Resolution #2023-412.

BY-LAW #2023-18 - SCHEDULE "A"

MAXIMUM SPEED LIMITS

Revised by Resolution #2024-427

1. Unless otherwise listed below, the maximum speed on rural mile roads/highways shall be 90 km/h.
2. Unless otherwise listed below or within a designated Reduced Speed School Zone, the maximum speed within the LUD of Richer shall be 50 km/h.

HIGHWAY	LOCATION FROM	LOCATION TO	AREA	SPEED LIMIT (per hour)	Notes
1st Avenue			Giroux	30km	
2nd Street			Giroux	30km	
Arbey Lane				50km	
Caledonia Road			Ste. Anne	70km	
Carlton Drive			La Coulee	50km	
Country Roots Lane				50km	
Dawson Road	Road 40E (PR207)	Richer (SW Dr/Perimeter Rd NW)		70km	Updated July 2024
Dawson Road	Civic #44131	Road 48E		70km	Updated July 2024
Deer Lane				50km	
Deerfield Drive			La Coulee	50km	
Elmdale Drive			Greenland	50km	Updated September 2024
Faucher Road			La Coulee	50km	Updated September 2024
Gagnon Drive			La Coulee	50km	Updated September 2024
Godard Street			Richer	30km	
Kropp Road				60km	Updated September 2024
Lanctot Drive			Ste. Anne	50km	
Langevin Road			Ste. Anne	70km	Updated September 2024
Lilac Lane			La Coulee	70km	Updated October 2023
Nault Street			Richer	30km	
Owens Road				70km	Updated September 2024
Parkland Drive			La Coulee	50km	Updated September 2024
Piney Road			Ste. Anne	60km	Updated September 2024
Proulx Boulevard			La Coulee	50km	Updated September 2024
Proulx Road	St. Raymond Rd	Road 44N	La Coulee	70km	Updated September 2024
Proulx Road	Road 44N	Dawson Road	La Coulee	50km	Updated September 2024
Road 35E	Road 42N	Two Mile Road		60km	
Road 36N (Loewen Blvd)	Road 36E	Road 41E		70km	
Road 36N (Duhamel Rd)	PR 302	East to Dead End		70km	Updated July 2024
Road 37E	Road 36N	PR 311		70km	Updated September 2024
Road 37E	Hwy #1E	Road 48N		70km	Updated September 2024
Road 37N	Road 36E	PR 210		70km	Updated September 2024
Road 38E	Road 36N	PR 311		70km	Updated September 2024
Road 38E	Hwy #1E	Road 47N		60km	Updated September 2024
Road 38N	Road 39E	Road 36E		70km	
Road 39E	Road 36N	Road 38N		70km	Updated September 2024
Road 39E	PR 311	North to Dead End	Giroux	30km	
Road 39E (Paradise Rd)	Dawson Road	Hwy #1E	La Coulee	70km	
Road 39E	Hwy #1E	Road 47N		60km	
Road 39N	PR 302	East to Dead End		70km	Updated September 2024
Road 40E	Road 43N	Road 44N	La Coulee	70km	Updated September 2024
Road 40E	Road 44N	Dawson Road	La Coulee	70km	Updated October 2023
Road 40E	Hwy 1	Road 48N		70km	Updated September 2024
Road 40N	Road 36E	Road 37E		70km	Updated September 2024
Road 40N	PR 302	Road 45E		70km	Updated September 2024
Road 41E	Road 42N	Dawson Road		70km	Updated September 2024
Road 41E	Dawson Road	Hwy #1E		50km	Updated September 2024
Road 41E	Hwy #1E	Road 48N		70km	Updated September 2024
Road 41N	Road 36E	Road 38E		70km	Updated September 2024
Road 42E	Hwy #1E	South to Dead End		70km	Updated September 2024
Road 42E	Hwy #1E	North to Ford Cross.		70km	Updated September 2024
Road 42N	PTH #12	Road 35E		60km	
Road 42N	PR 210	Road 40E		70km	Updated September 2024
Road 43E	Dawson Road	South to Dead End		50km	Updated September 2024
Road 43E	Dawson Road	Hwy #1E		50km	
Road 43E	Hwy #1E	North to Dead End		70km	Updated September 2024
Road 43N (Greenland Rd)	Road 30E	Civic #31153	Greenland	70km	
Road 43N (Greenland Rd)	Civic #31153	Civic #32058	Greenland	40km	Updated September 2024
Road 43N (Greenland Rd)	Civic #32058	PTH #12	Greenland	70km	
Road 43N (Greenland East Rd)	PTH #12	Road 35E	Greenland	70km	
Road 44N	Proulx Road	Road 40E		70km	Updated October 2023

BY-LAW #2023-18 - SCHEDULE "A"

MAXIMUM SPEED LIMITS

HIGHWAY	LOCATION FROM	LOCATION TO	AREA	SPEED LIMIT (per hour)	Notes
Road 44N	PR 302	West to Dead End	Richer	50km	Updated September 2024
Road 44N	PR 302	Road 45E	Richer	60km	Updated September 2024
Road 45E	Kropp Road	Hwy #1E		70km	Updated September 2024
Road 45E	Hwy #1E	Road 48N		70km	
Road 45N	Lilac Lane	Paradise Rd (39E)		70km	Updated September 2024
Road 45N	Paradise Rd (39E)	Hwy #1E Service Rd		60km	Updated September 2024
Road 46E	Road 44N	Civic #44068		50km	
Road 46E	Civic #44068	Hwy #1E		70km	Updated September 2024
Road 46N	Road 39E	Road 40E		60km	
Road 46N	Road 42E	Road 43E		60km	Updated September 2024
Road 47N	Road 37E	Road 38E		70km	Updated September 2024
Road 47N	Road 38E	Road 40E		70km	Updated October 2023
Road 47N	Road 40E	Road 41E		70km	Updated September 2024
Road 48E	Hwy #1E	North to Dead End		50km	Updated September 2024
Road 48N	PTH #12	Road 41E		70km	
Road 48N	PR 302	East to Dead End		70km	
Seine Road	Traverse	Finnigan	Ste. Anne	60km	
Snake Road			La Coulee	50km	Updated September 2024
St. Raymond Road	Road 41N	Proulx Road		70km	Updated September 2024
St. Raymond Road	Proulx Road	PR 210		60km	Updated September 2024
Tall Grass Road				50km	
Therrien Drive			Richer	30km	
Thurston Drive			La Coulee	50km	
Tilstone Rd				50km	Updated September 2024
Traverse Road	PR 210	South to Dead End	Ste. Anne	70km	Updated September 2024
Two Mile Road	Road 35E	SE to Dead End		60km	
Verna's Way			La Coulee	50km	Updated September 2024



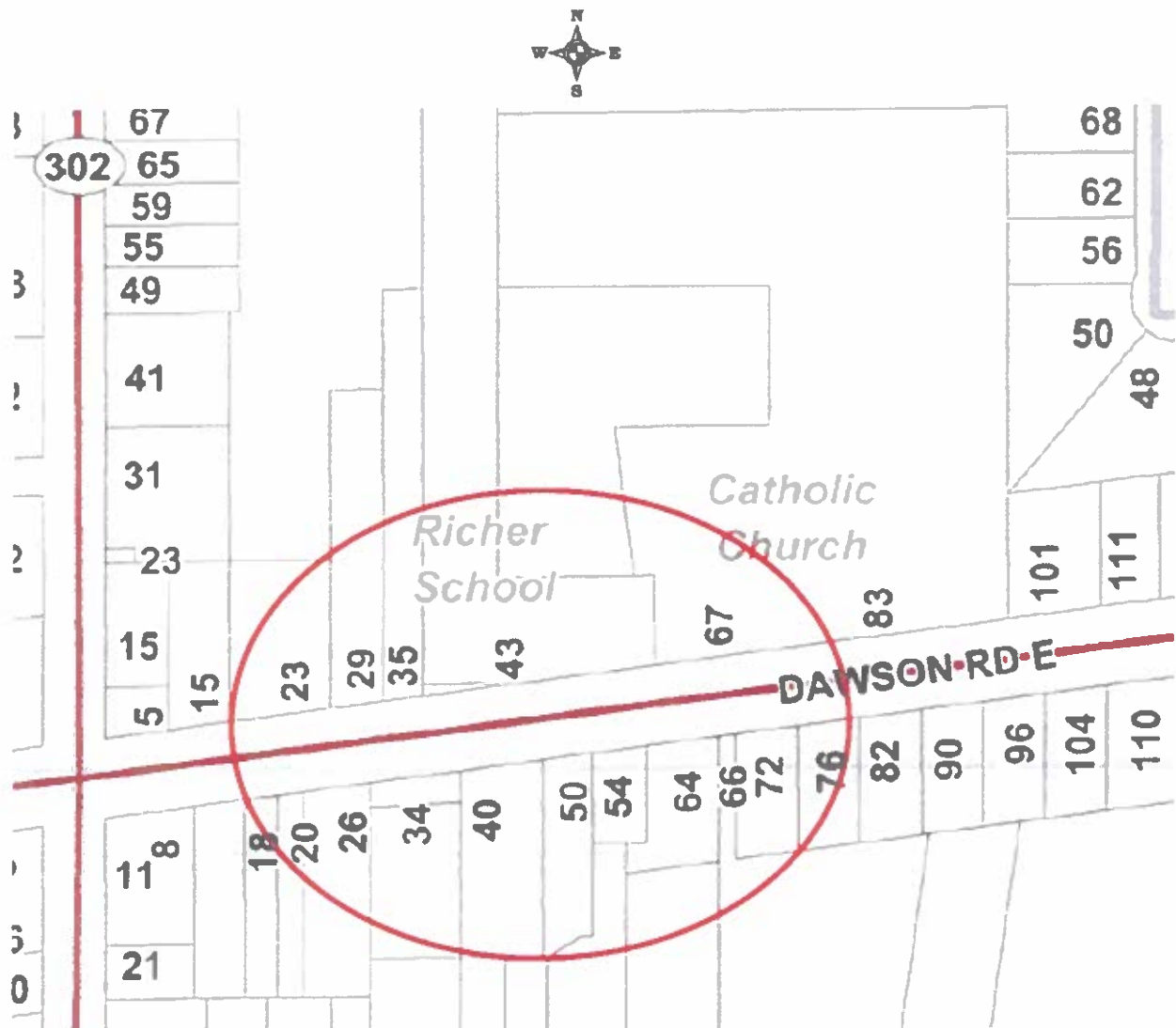
STE. ANNE MUNICIPALITY

BY-LAW #2023-18

SCHEDULE "B"

REDUCED-SPEED SCHOOL ZONE

100 m radius around property boundary of Richer School Property at 43 Dawson Rd E.



BY-LAW #2023-18
SCHEDULE "C" - Revised by Resolution #2024-53
MAXIMUM SPEED LIMITS

SPEEDING TABLE		TOTAL FINE
10 km/h	over the speed limit	\$181.00
11 km/h	over the speed limit	\$194.00
12 km/h	over the speed limit	\$207.00
13 km/h	over the speed limit	\$220.00
14 km/h	over the speed limit	\$233.00
15 km/h	over the speed limit	\$246.00
16 km/h	over the speed limit	\$259.00
17 km/h	over the speed limit	\$272.00
18 km/h	over the speed limit	\$285.00
19 km/h	over the speed limit	\$299.00
20 km/h	over the speed limit	\$312.00
21 km/h	over the speed limit	\$325.00
22 km/h	over the speed limit	\$338.00
23 km/h	over the speed limit	\$351.00
24 km/h	over the speed limit	\$364.00
25 km/h	over the speed limit	\$378.00
26 km/h	over the speed limit	\$391.00
27 km/h	over the speed limit	\$403.00
28 km/h	over the speed limit	\$416.00
29 km/h	over the speed limit	\$429.00
30 km/h	over the speed limit	\$442.00
31 km/h	over the speed limit	\$456.00
32 km/h	over the speed limit	\$469.00
33 km/h	over the speed limit	\$482.00
34 km/h	over the speed limit	\$495.00
35 km/h	over the speed limit	\$508.00
36 km/h	over the speed limit	\$521.00
37 km/h	over the speed limit	\$535.00
38 km/h	over the speed limit	\$548.00
39 km/h	over the speed limit	\$561.00
40 km/h	over the speed limit	\$573.00
41 km/h	over the speed limit	\$586.00
42 km/h	over the speed limit	\$599.00
43 km/h	over the speed limit	\$613.00
44 km/h	over the speed limit	\$626.00
45 km/h	over the speed limit	\$639.00
46 km/h	over the speed limit	\$652.00
47 km/h	over the speed limit	\$665.00
48 km/h	over the speed limit	\$678.00
49 km/h	over the speed limit	\$692.00
50 km/h	over the speed limit	\$705.00
51 km/h	over the speed limit	\$718.00
52 km/h	over the speed limit	\$731.00
53 km/h	over the speed limit	\$744.00
54 km/h	over the speed limit	\$756.00
55 km/h	over the speed limit	\$770.00
56 km/h	over the speed limit	\$783.00
57 km/h	over the speed limit	\$796.00
58 km/h	over the speed limit	\$809.00
59 km/h	over the speed limit	\$822.00
60 km/h	over the speed limit	\$835.00
61 km/h	over the speed limit	\$849.00
62 km/h	over the speed limit	\$862.00
63 km/h	over the speed limit	\$875.00
64 km/h	over the speed limit	\$888.00
65 km/h	over the speed limit	\$901.00
66 km/h	over the speed limit	\$914.00
67 km/h	over the speed limit	\$927.00
68 km/h	over the speed limit	\$940.00
69 km/h	over the speed limit	\$953.00
70 km/h	over the speed limit	\$966.00
71 km/h	over the speed limit	\$979.00
72 km/h	over the speed limit	\$992.00
73 km/h and over	over the speed limit	\$1,000.00

CONSTRUCTION ZONE SPEEDING TABLE		TOTAL FINE
10 km/h	over the construction zone speed limit	\$312.00
11 km/h	over the construction zone speed limit	\$338.00
12 km/h	over the construction zone speed limit	\$364.00
13 km/h	over the construction zone speed limit	\$391.00
14 km/h	over the construction zone speed limit	\$416.00
15 km/h	over the construction zone speed limit	\$442.00
16 km/h	over the construction zone speed limit	\$469.00
17 km/h	over the construction zone speed limit	\$495.00
18 km/h	over the construction zone speed limit	\$521.00
19 km/h	over the construction zone speed limit	\$548.00
20 km/h	over the construction zone speed limit	\$573.00
21 km/h	over the construction zone speed limit	\$599.00
22 km/h	over the construction zone speed limit	\$626.00
23 km/h	over the construction zone speed limit	\$652.00
24 km/h	over the construction zone speed limit	\$678.00
25 km/h	over the construction zone speed limit	\$705.00
26 km/h	over the construction zone speed limit	\$731.00
27 km/h	over the construction zone speed limit	\$756.00
28 km/h	over the construction zone speed limit	\$783.00
29 km/h	over the construction zone speed limit	\$809.00
30 km/h	over the construction zone speed limit	\$835.00
31 km/h	over the construction zone speed limit	\$862.00
32 km/h	over the construction zone speed limit	\$888.00
33 km/h	over the construction zone speed limit	\$914.00
34 km/h	over the construction zone speed limit	\$940.00
35 km/h	over the construction zone speed limit	\$966.00
36 km/h	over the construction zone speed limit	\$992.00
37 km/h and over	over the construction zone speed limit	\$1,000.00